

Symmetry

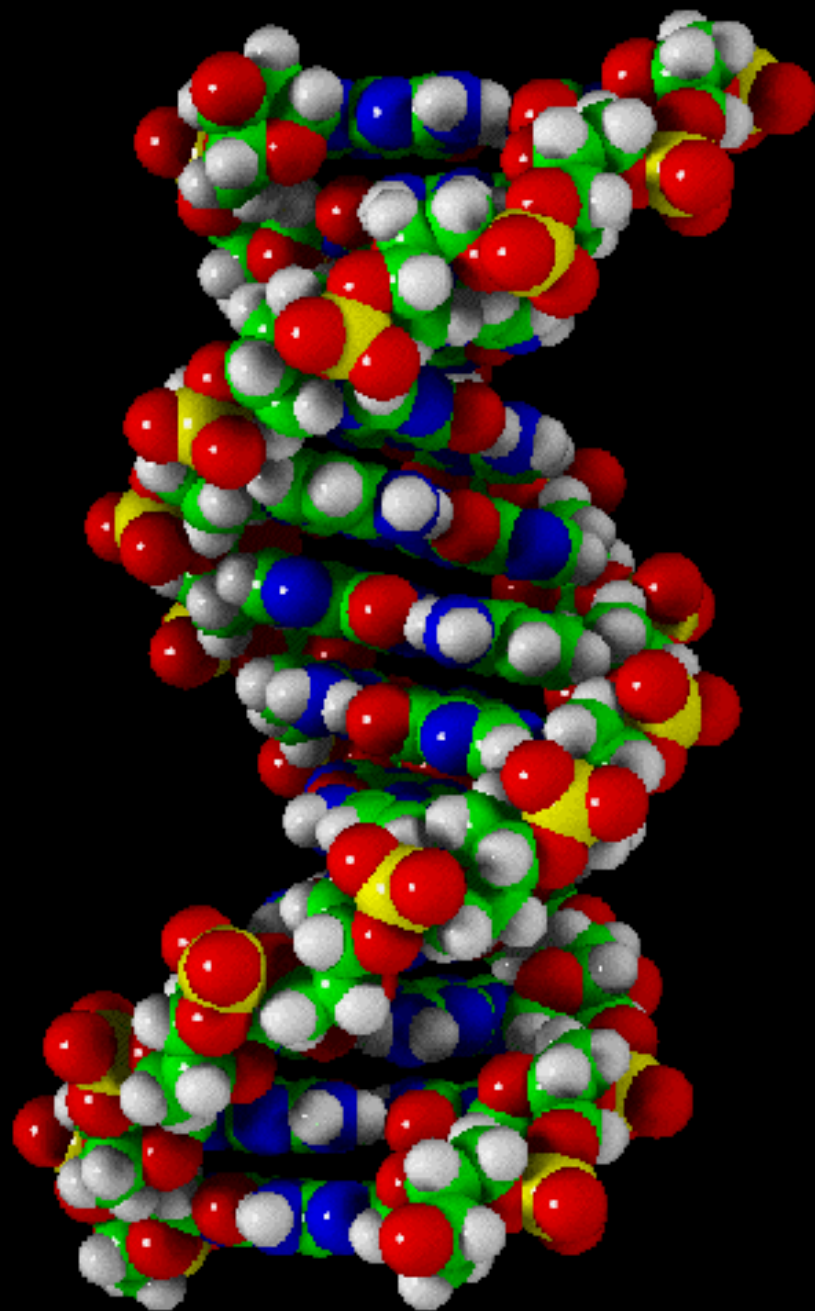
Symmetry

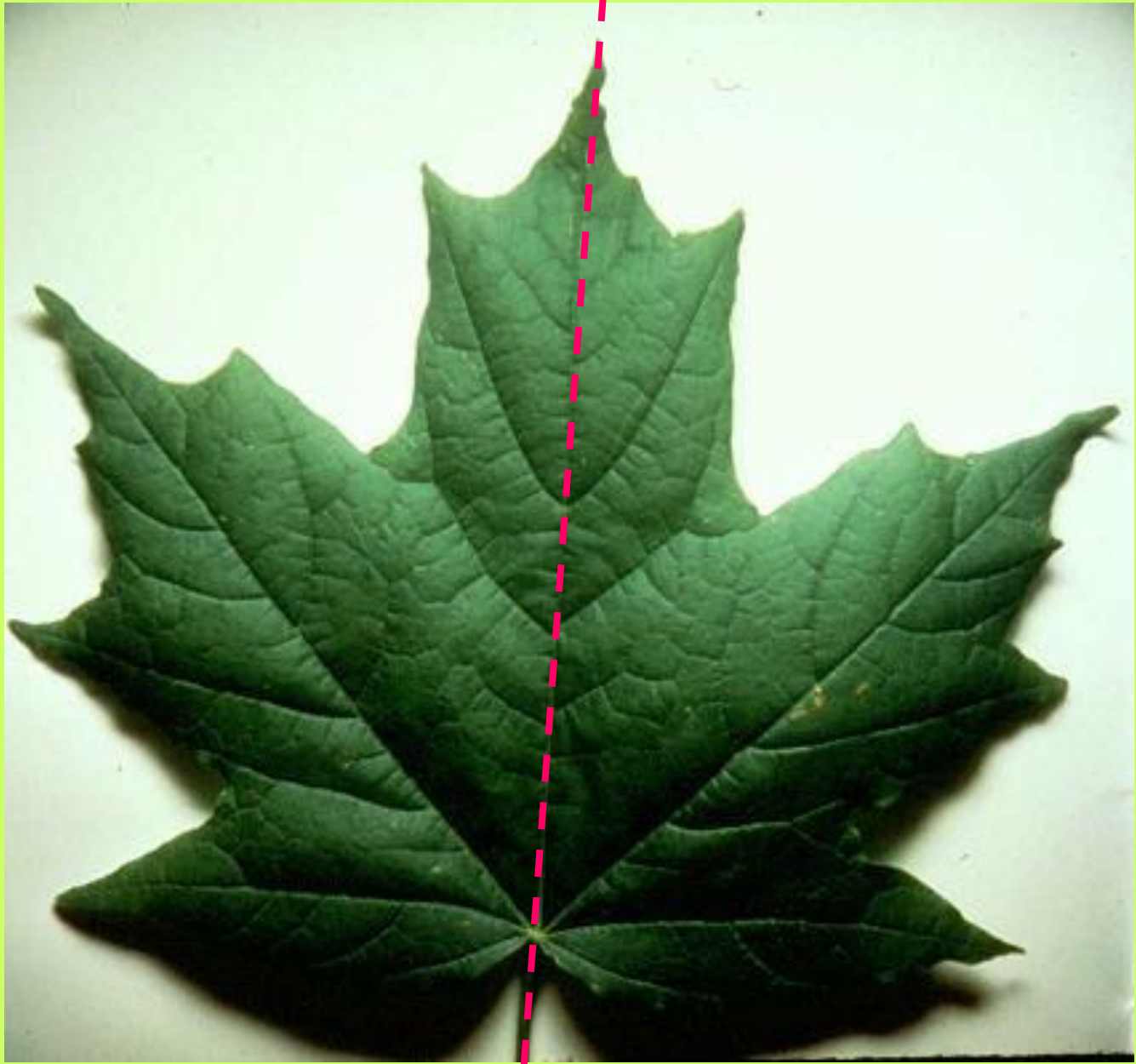
- **Two types of symmetry**
 - **Reflectional Symmetry:**
you can fold along a line of symmetry
 - **Rotational Symmetry:**
it looks the same after you turn it around (less than a full circle).



Your Task

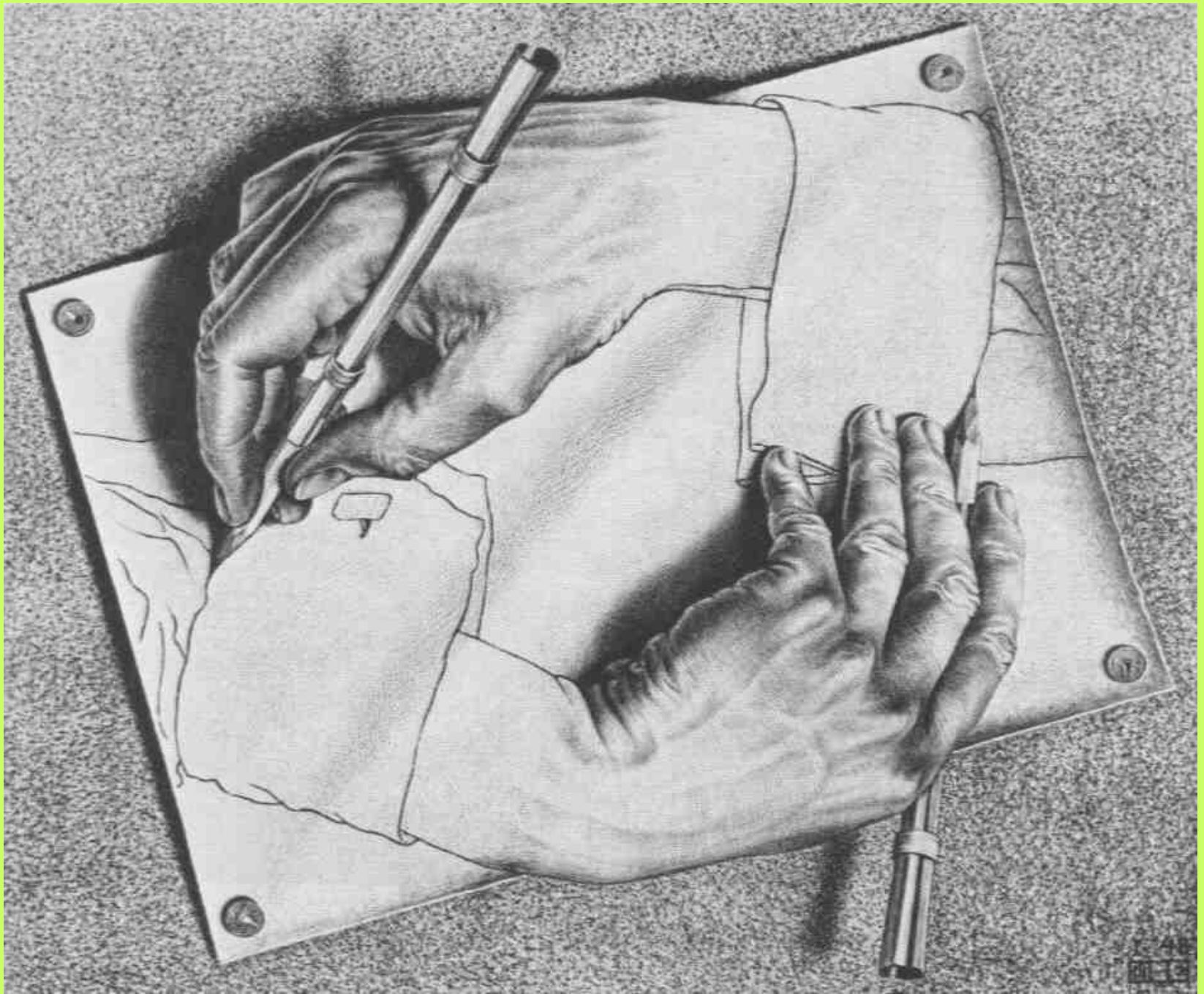
As you go through the following slides determine whether each picture has reflectional symmetry, rotational symmetry, or both.

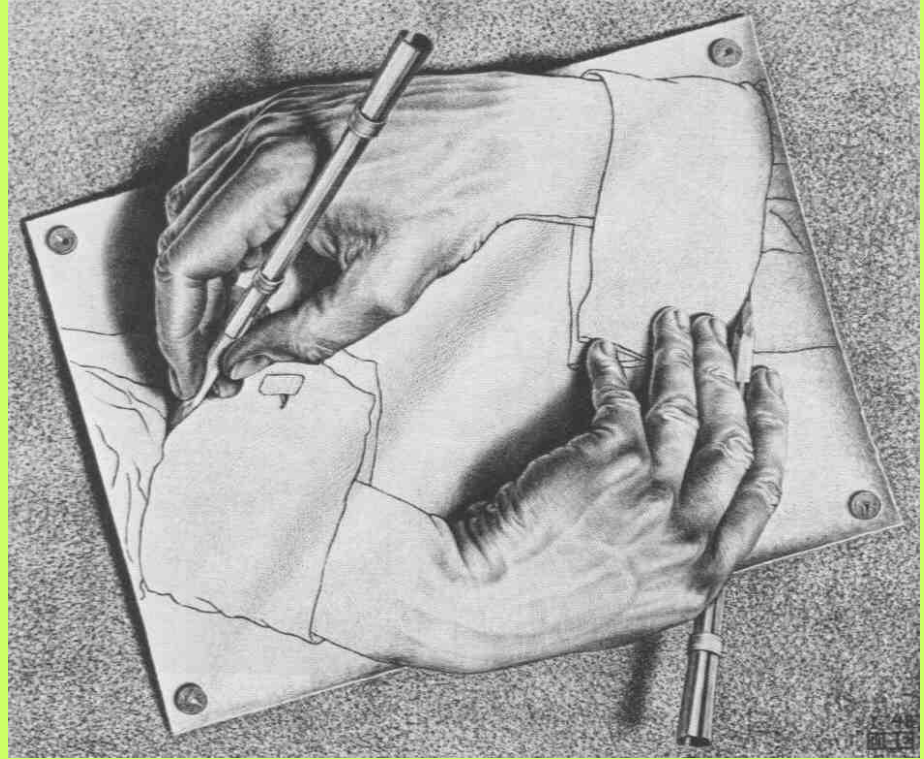
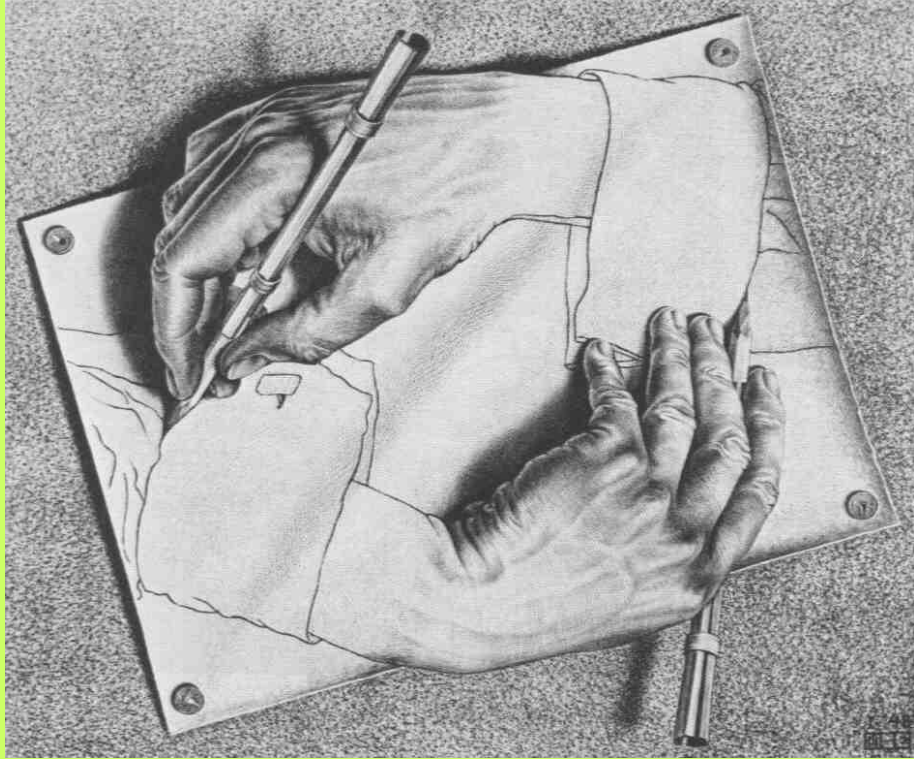




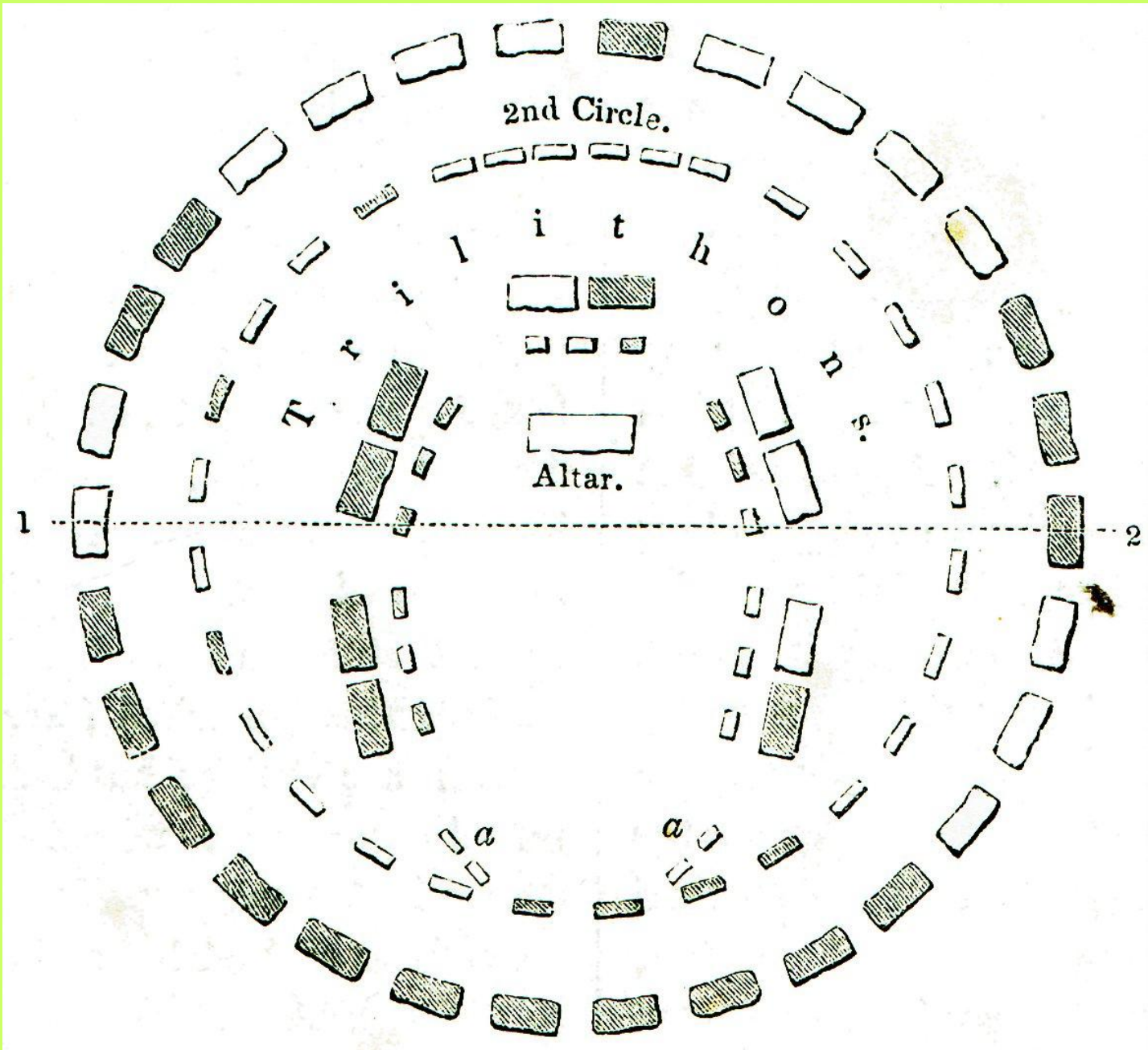




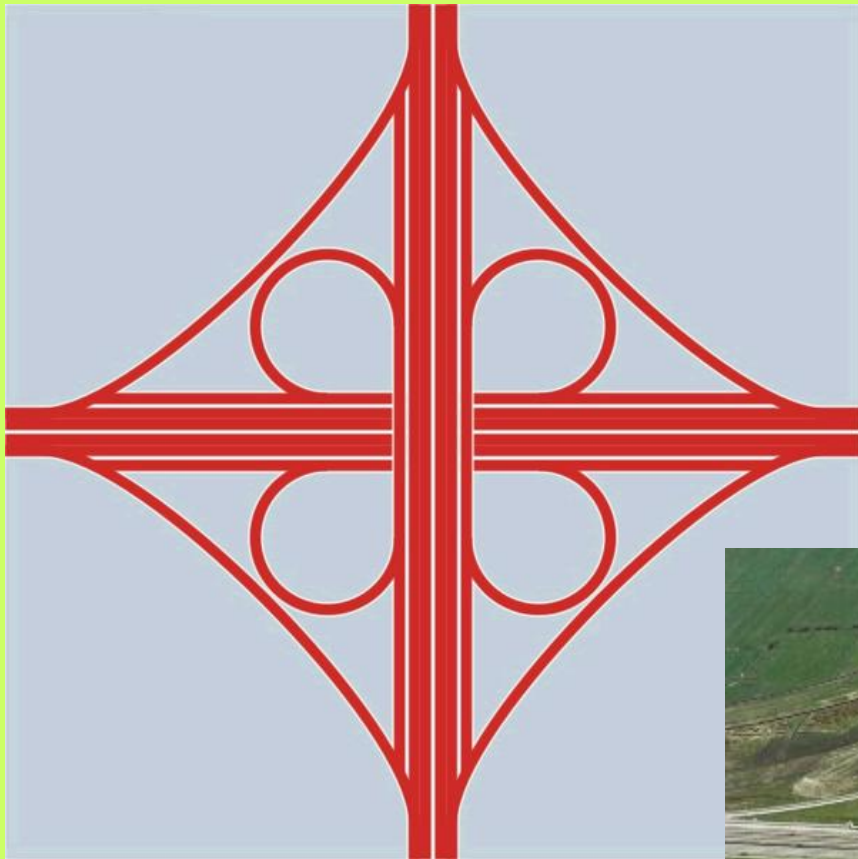






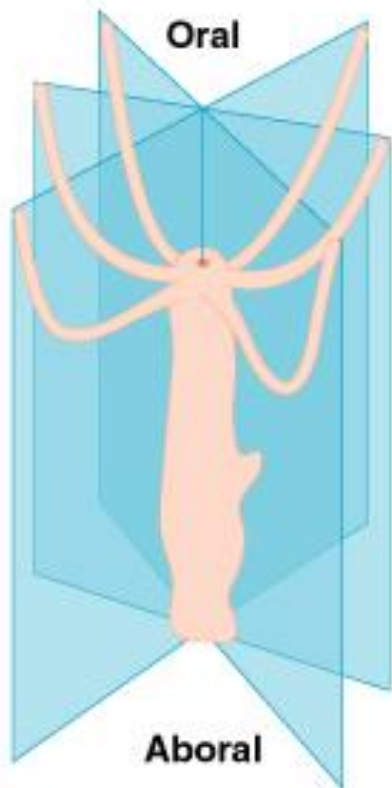




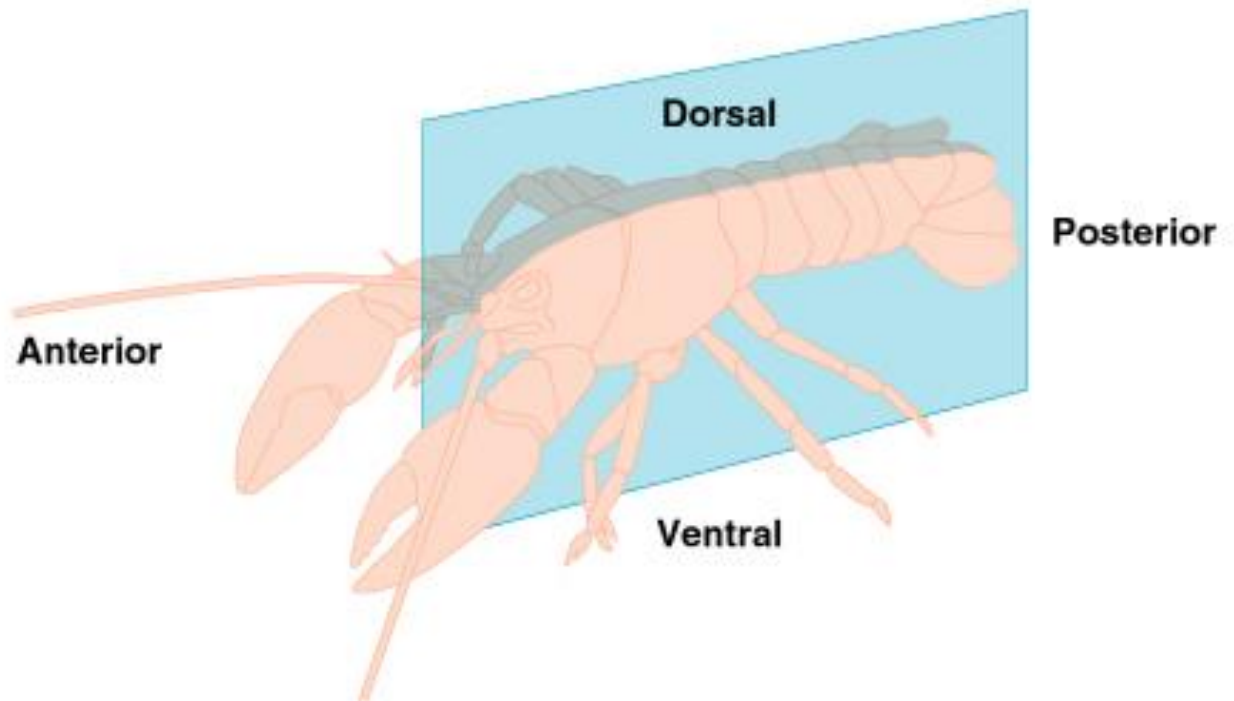








(a) Radial symmetry



(b) Bilateral symmetry

