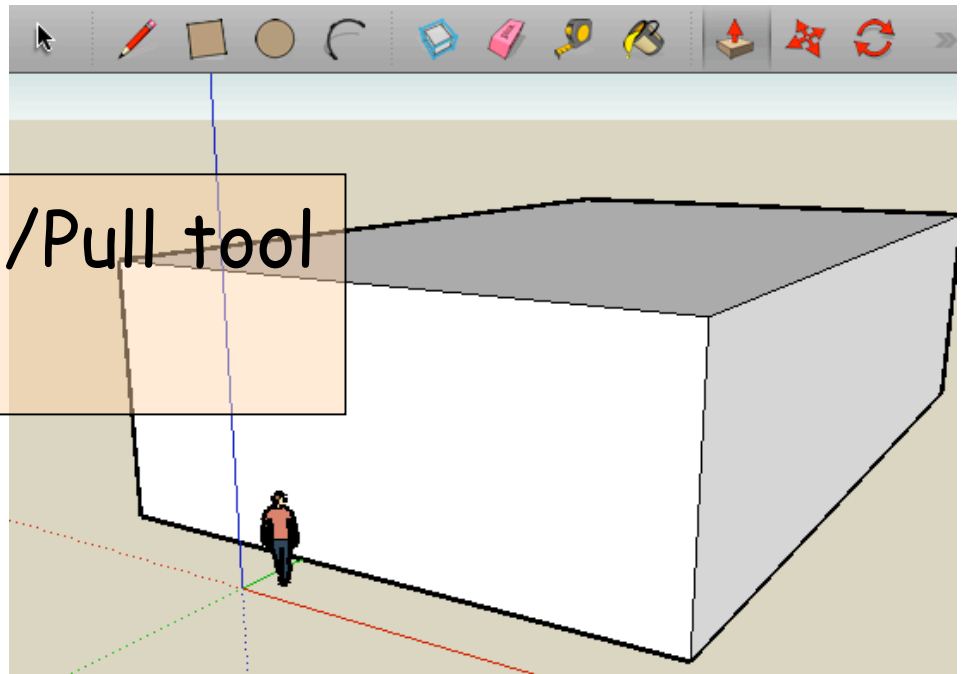
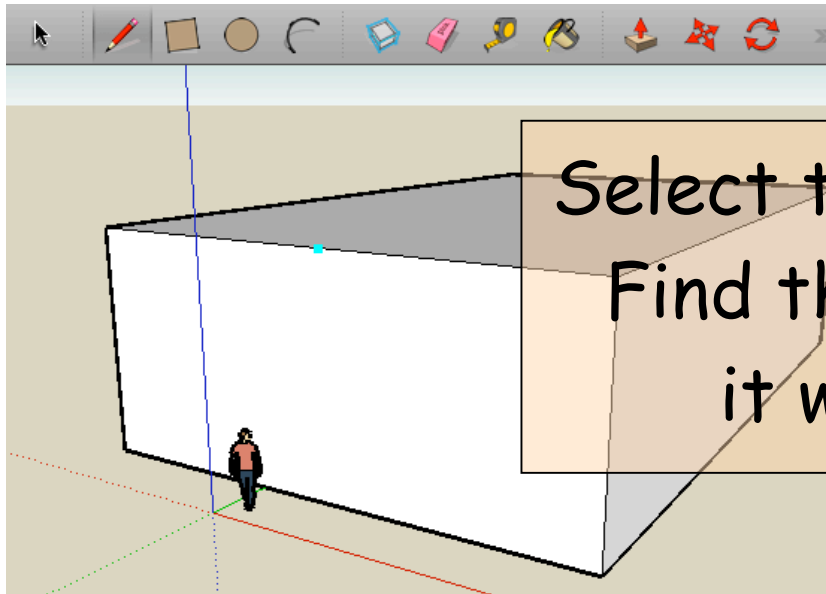


Start by drawing a rectangle on the floor

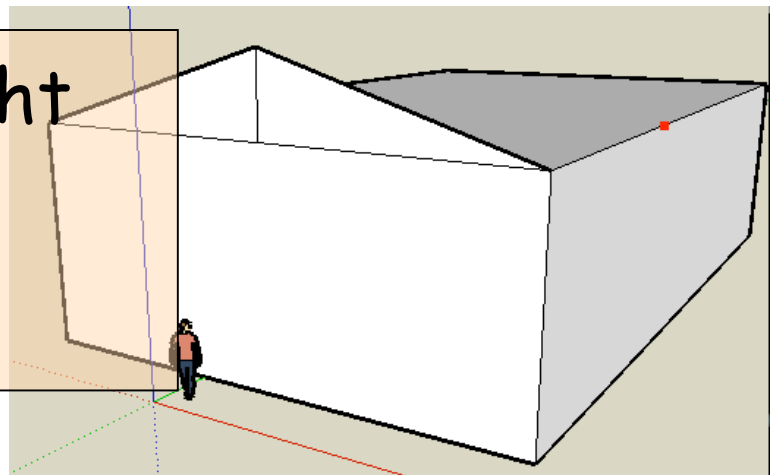


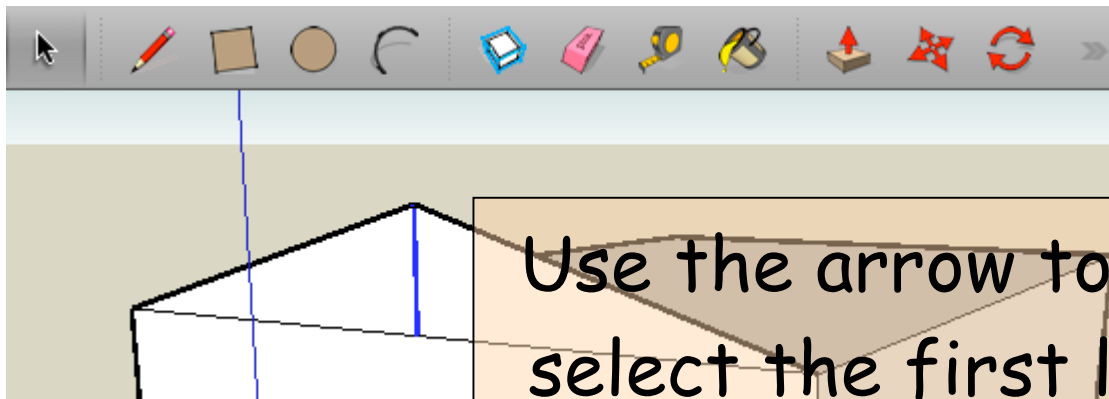
Use the Push/Pull tool to drag it up



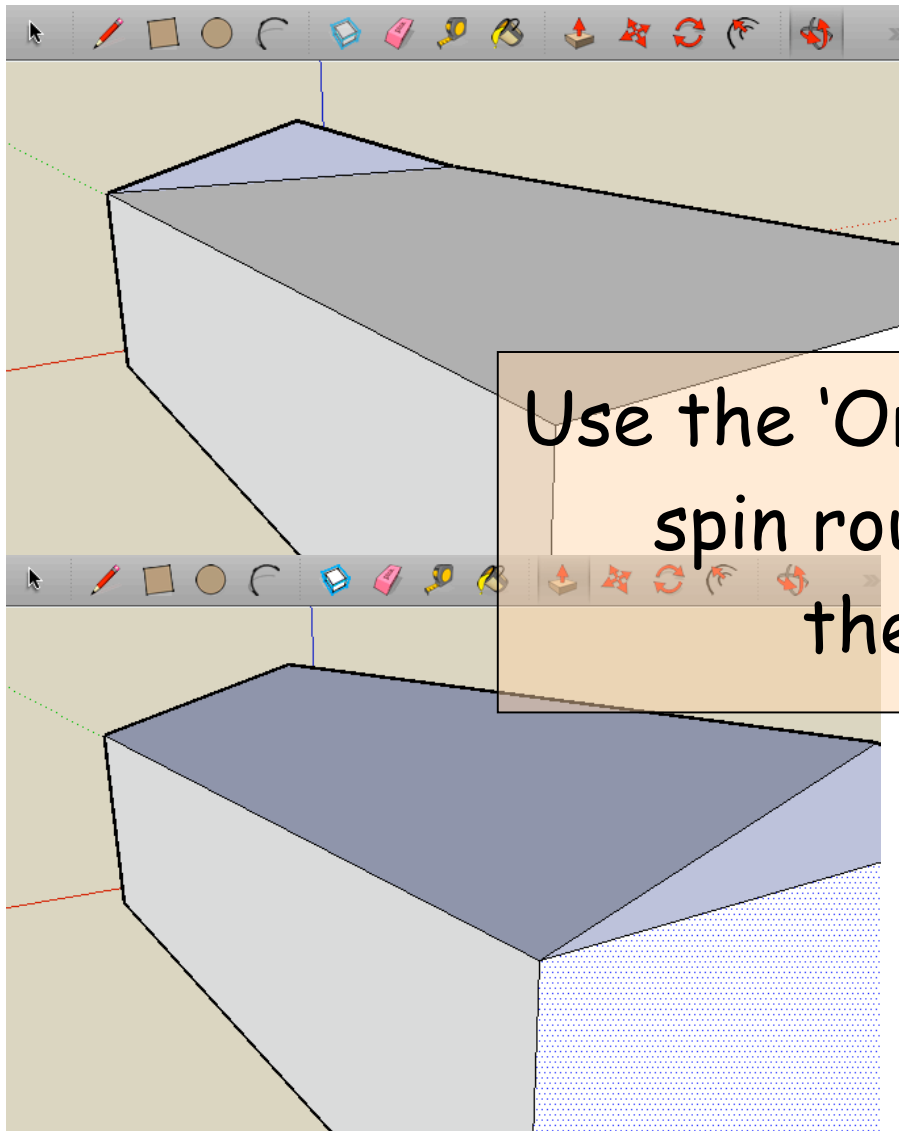
Select the pencil tool.
Find the 'midpoint' -
it will jump there

Draw a line straight
up and finish the
triangle

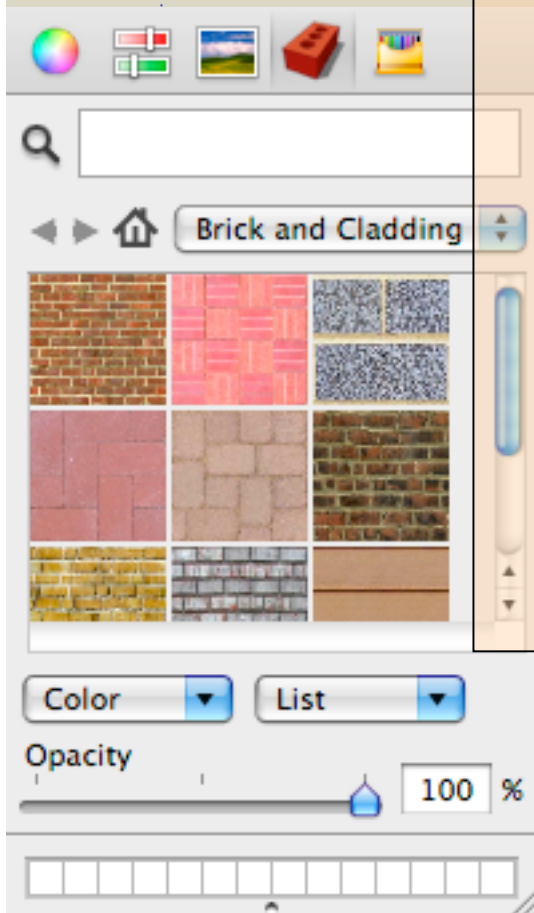
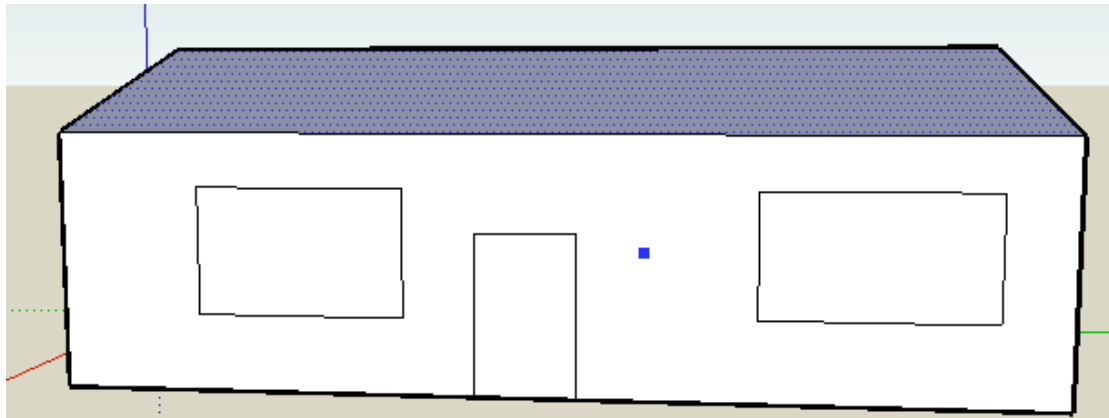




Use the arrow tool to select the first line - press delete

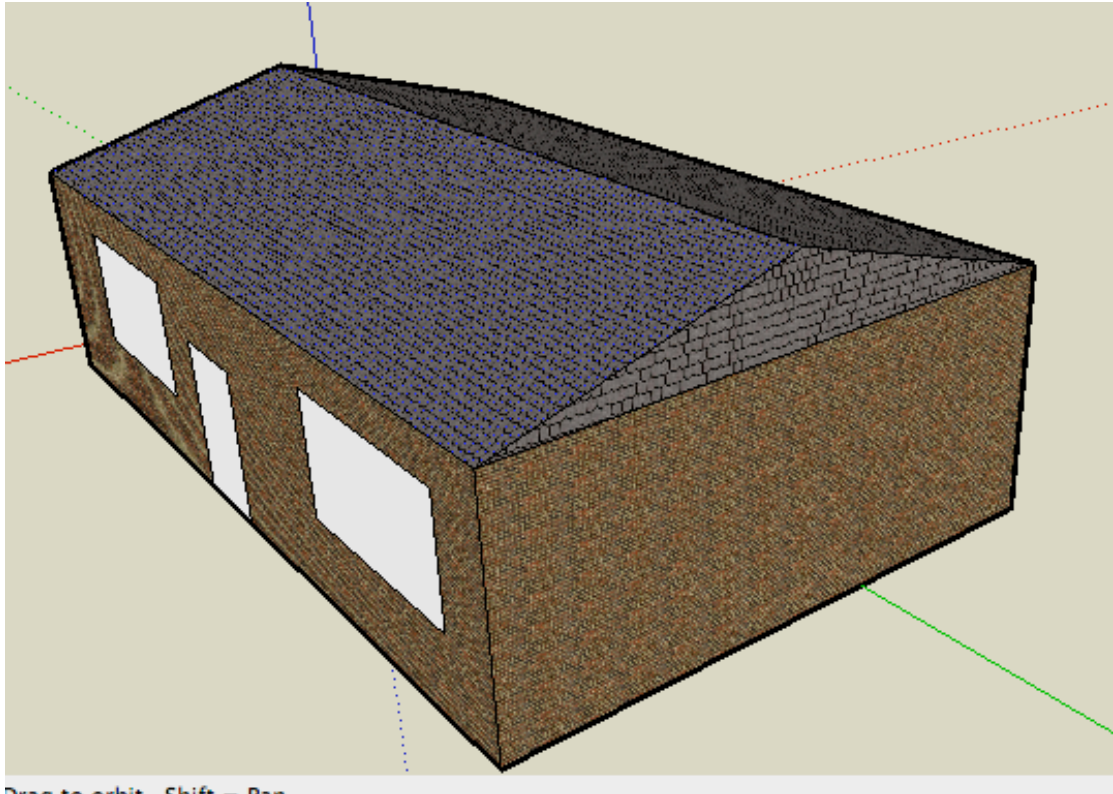


Use the 'Orbit' tool to spin round and pull the roof along

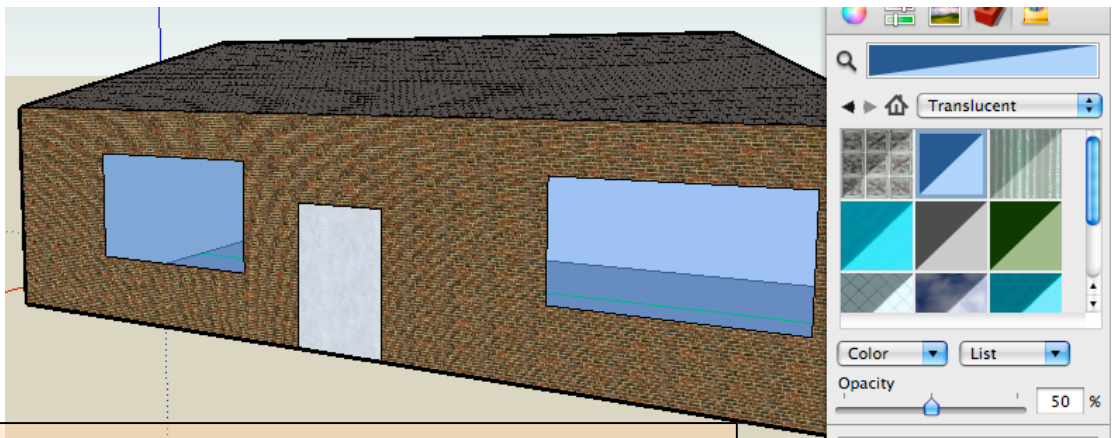


Draw some windows
and doors.

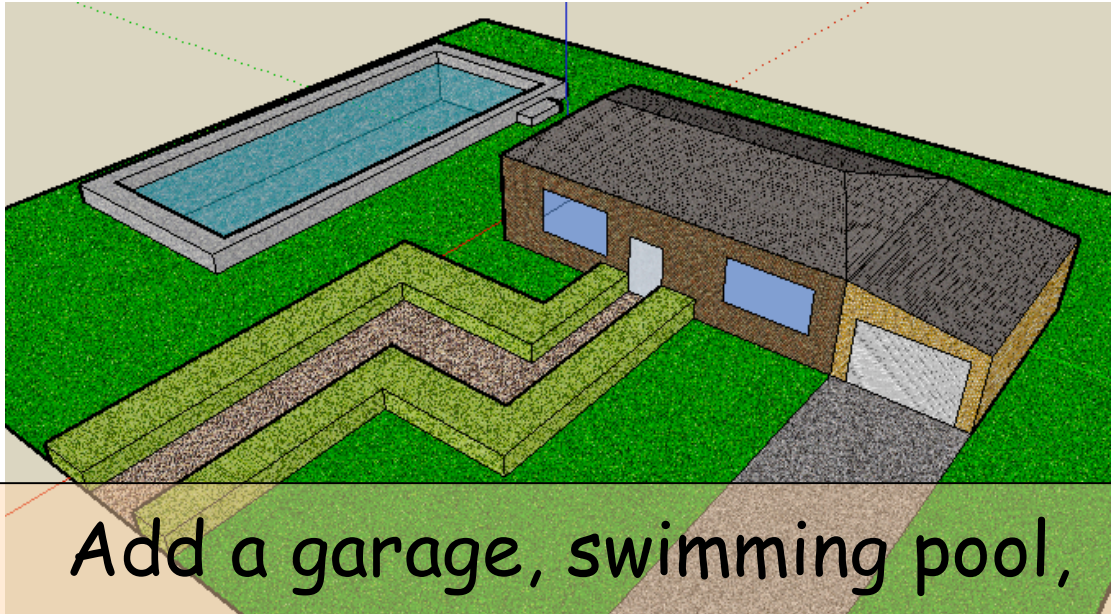
Click on the paint
bucket and choose
some textures



Drag to orbit Shift + Pan



Try using translucent
colours for the
windows



Add a garage, swimming pool,
driveway, garden...